

Ada-Rep: Adaptive Searching and Replication of Images in Mobile Hierarchical Peer-to-Peer Networks

Mobile Hierarchical P2P Simulator

Author: Kumar Abhinay Rathore

www.AbhinayRathore.com

M.S Computer Science

University of Missouri-Rolla

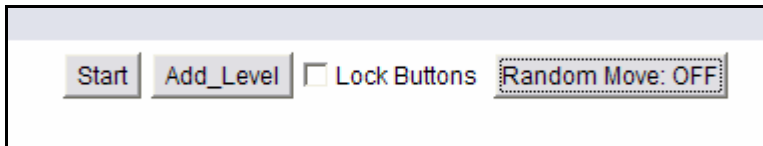
Advisor: Dr. Sanjay Madria

How to run the Simulator:

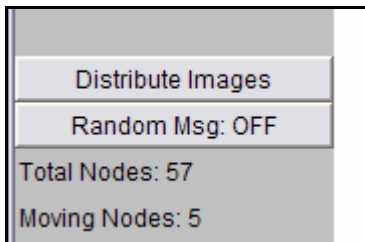
1. Load the M-P2P Project folder in Java® [Netbeans](#)® IDE.
2. Open the M_P2P.java file under Source Packages.
3. Press Alt+F6 to run the Simulator Applet.

How to initialize the Simulator:

1. Press "Start" Button to initialize the Super-peer Node.
2. Press "Add Level" button to add levels.



3. Distribute the images by pressing "Distribute Images" button
4. Press "Random Msg" button to toggle random messaging On or Off.



5. Press "Random Move" button to toggle random node movement On or Off.
 6. Click on any Node to view its Message Table and Image Cache.
-
-

